

## How to set up Wi-Fi via sound wave pairing?

This article applies to: Cue 2, Ranger 2, LOOC, Bullet Lite, Ranger Pro  
We use LOOC as an example.

Before set up the Wi-Fi, please scan the following QR code or search “Imou Life” in Google Play or App Store to download and install Imou Life App.



Tip: If you have installed the App, please update it to the latest version.

### Step 1:

Run Imou Life App, and then register an account for the first use.

### Step 2:

Power on your device, and wait till the camera indicator flashes green.



Tip: if the camera doesn't flash green, please press the reset button for 10s to reset the camera, then start again.



**Step 3:**

Connect your smartphone to the same Wi-Fi signal that you want to connect your camera.

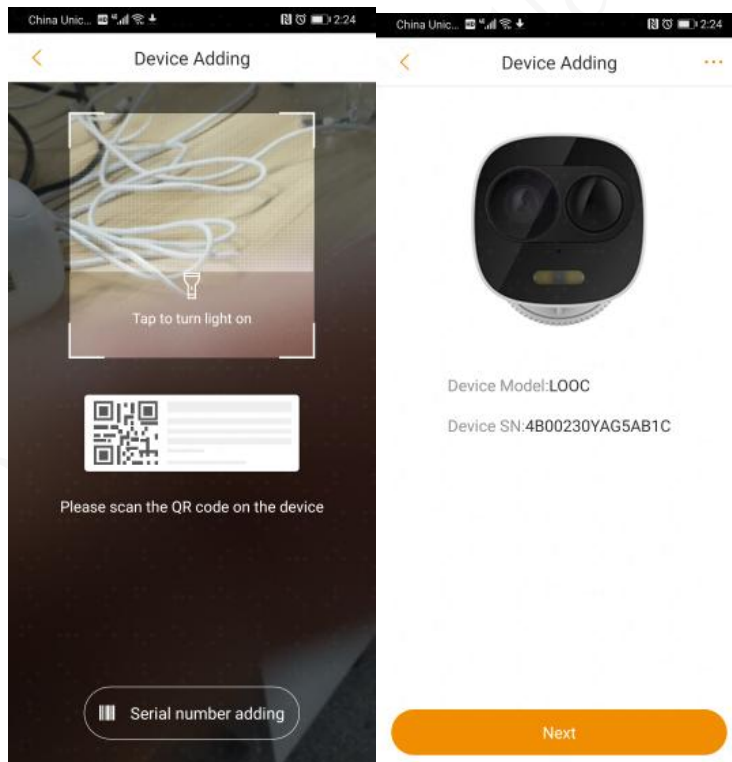
Tip: Please check whether your camera supports Dual-band Wi-Fi or only 2.4Ghz. For example, LOOC supports only 2.4GHz, please connect your phone to 2.4GHz of your Wi-Fi router during the configuration.

AVAILABLE NETWORKS

- Imou Smart\_2.4G ✓
- Imou Smart\_2.4G/5G ✓
- Imou Smart\_5G ✗

**Step 4:**

Scan the QR code in the device label with the App, then start to configure the network.

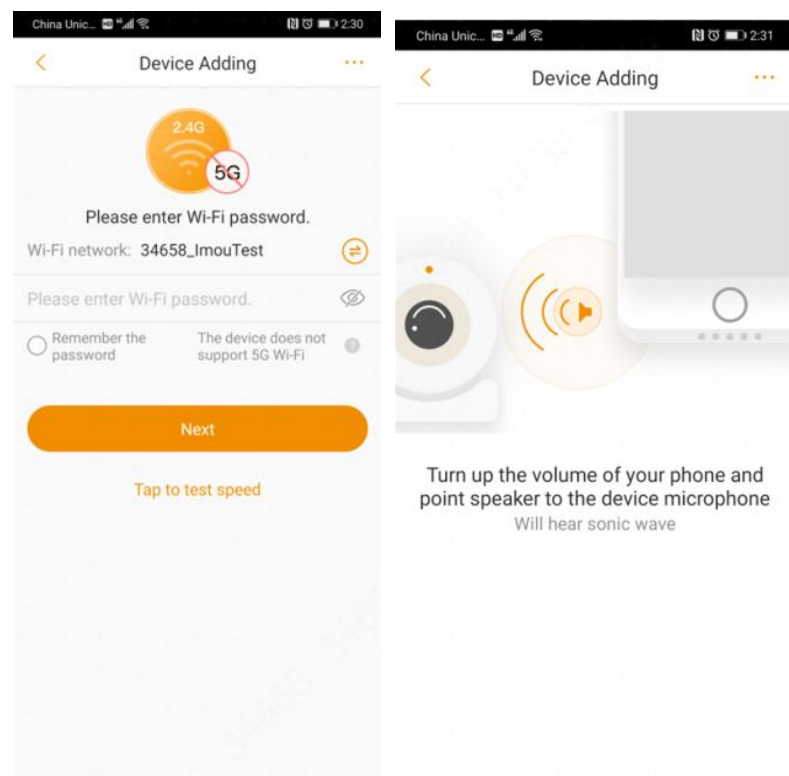


**Step 5:**

Type in the password of your Wi-Fi, and tap “Next”, your will hear sonic wave, and camera will

start connecting to your Wi-Fi.

Tip: During the connecting, please turn up the volume of your phone, and put your camera and phone within 30cm, point phone's speaker to the device microphone.



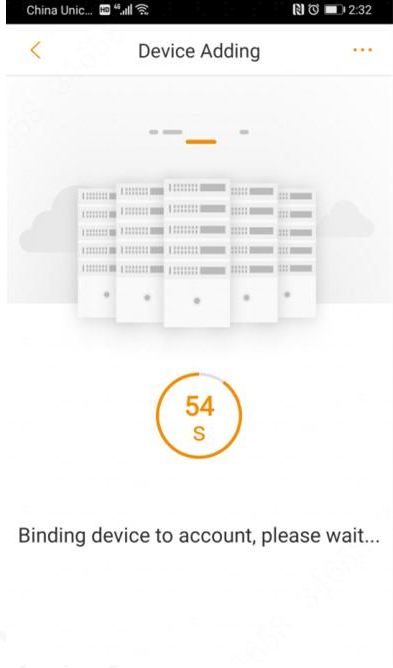
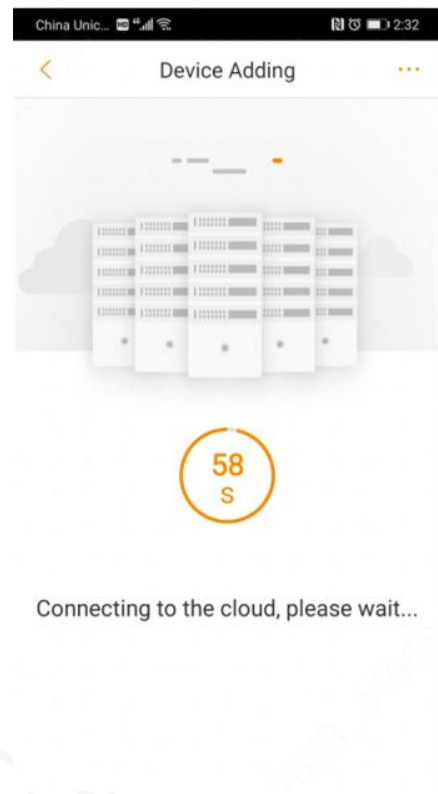
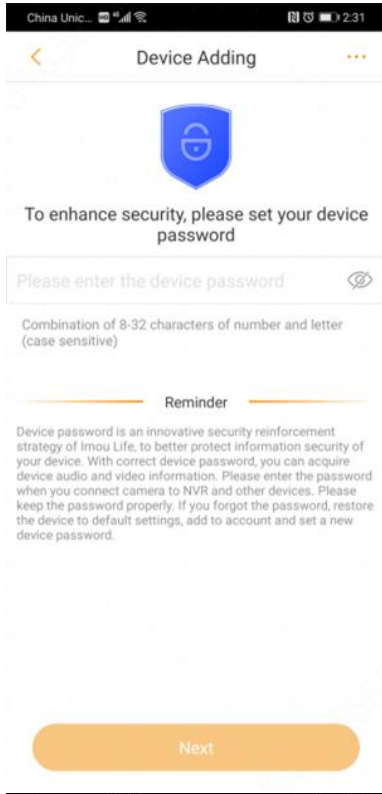
**Step 6:**

Your device will connect to you Wi-Fi signal.

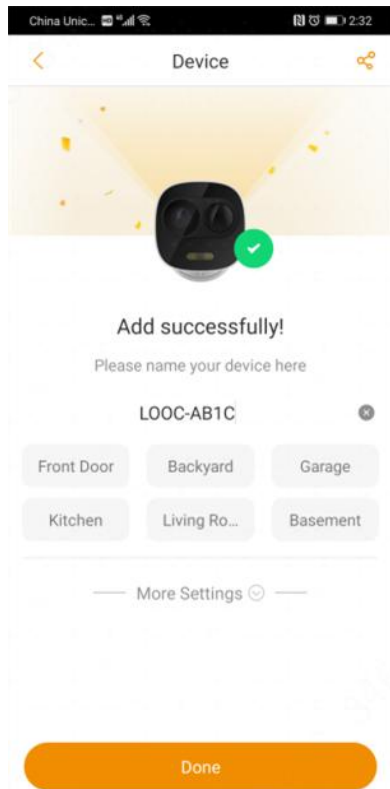
Tip: When connecting the device indicator will flash red, after successfully connected the indicator will stay green.

**Step 7:**

Setup a password for your device, and it will automatically connect to Imou cloud and bind to your Imou Account.



**Step 8:**  
Name your device, and enjoy it!



If you have any further question, please feel free to contact us: [service.global@imoulife.com](mailto:service.global@imoulife.com)  
We will reply you within 24Hours.